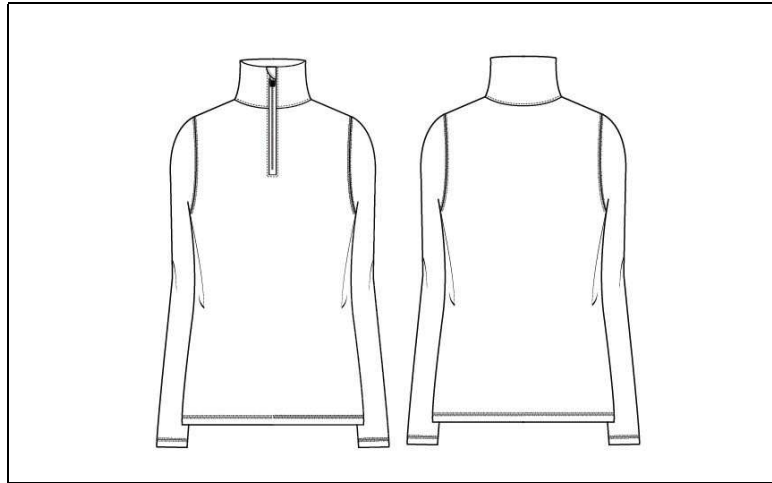




MEASUREMENT SPECIFICATION REPORT



STYLE # W3006 women's 1/4 zip lightweighth pullover

FABRICATION
100% POLYESTER INTERLOCK

Point of Measurement (inches)

Front Body Length from HPS

Bust @ 1" below armhole

| XS | S | M | L | XL | 2XL | 3XL |
|-----------|----------|----------|----------|-----------|------------|------------|
| 24 1/4 | 24 3/4 | 25 3/4 | 26 3/4 | 27 3/4 | 28 3/4 | 29 1/4 |
| 17 | 18 | 19 | 20 1/2 | 22 | 23 1/2 | 25 1/2 |

Disclaimer: Please note that the above sizing chart is subject to change. For more detailed information, please contact an ALO Customer Service Representative.