

fwdfashion

7504

WOMEN'S CUT OUT FLEECE HOODIE

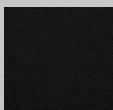
FABRIC: 52% Airlume combed and ring-spun cotton, 48% polyester fleece, 32 singles 6.5oz.

FEATURES: Cross-over hood, dyed-to-match drawcords and cropped body.

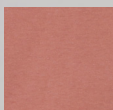
WOMEN'S SIZES:

- S / SMALL
- M / MEDIUM
- L / LARGE

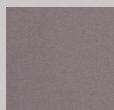
AVAILABLE COLORS:



BLACK



MAUVE



STORM



BELLA+CANVAS®
SHOP NOW AT [BELLACANVAS.COM](https://bellacanvas.com)